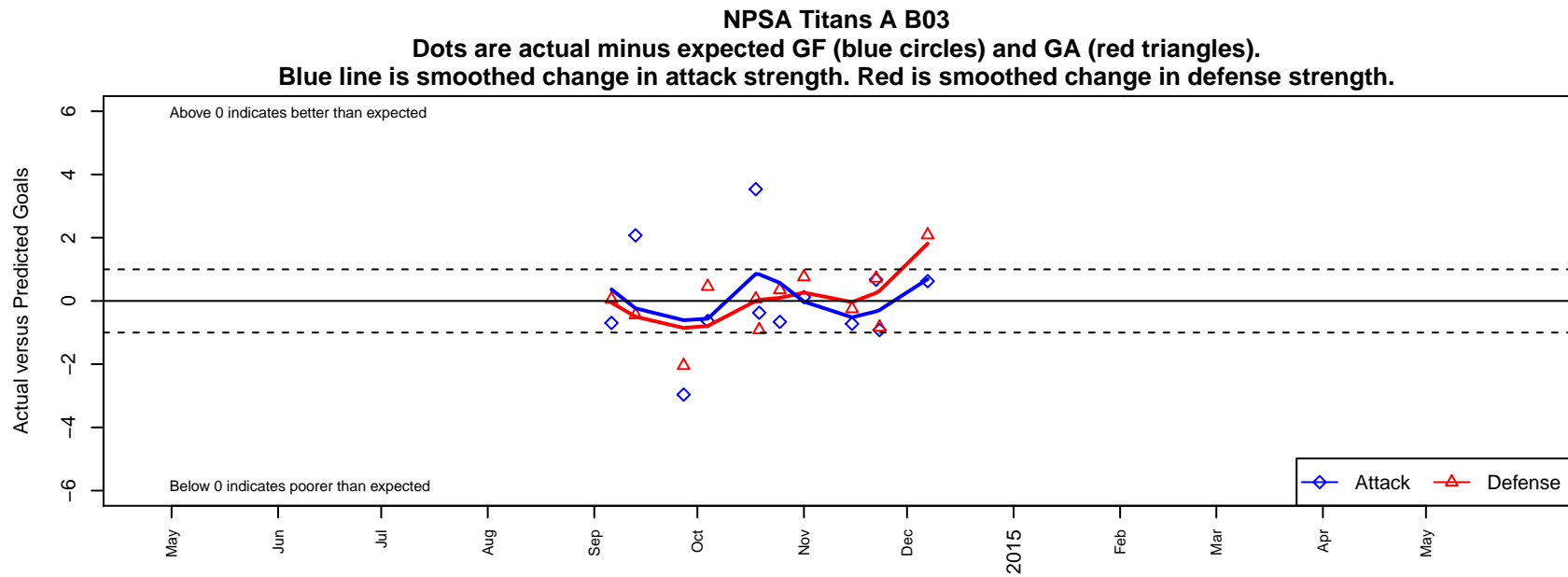


NPSA Titans A B03

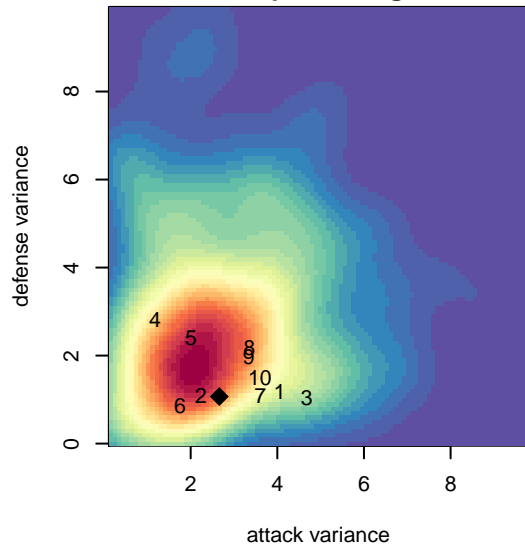
Nowland Premier SA
Bellevue, WA
B03 total strength=242
attack=0.18 defense=0.12
fall league = PSPL Copa U11

alt names used:
NPSA TITANS B03 A

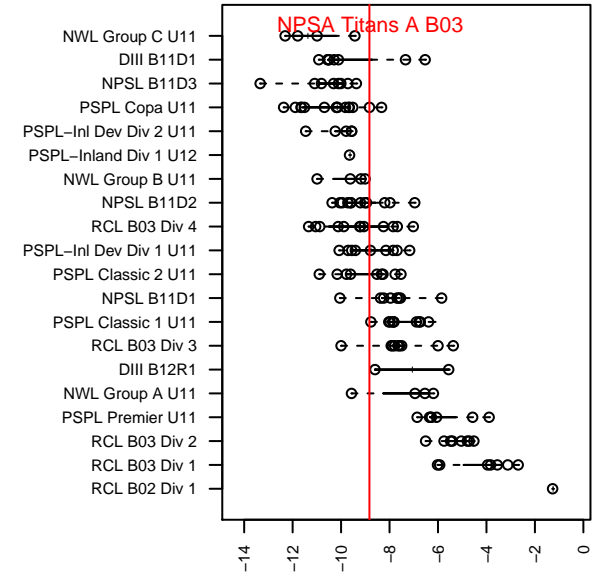
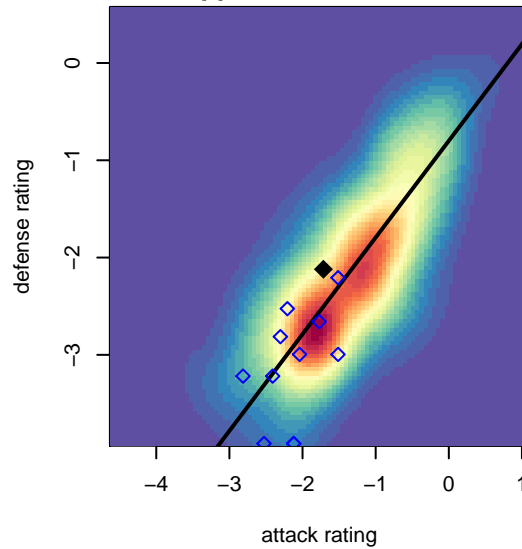
Venues played:
2014 PSPL Copa U11



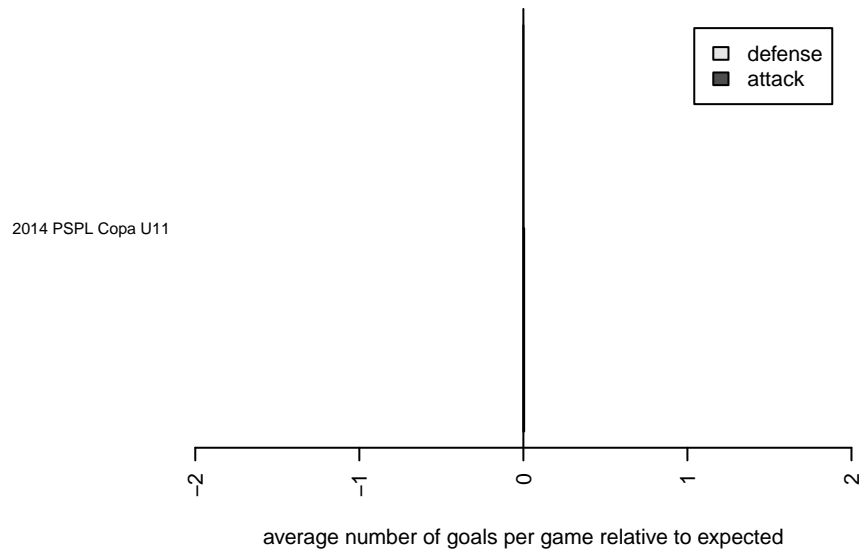
**attack and defense variance (black dot)
relative to other teams
and top 10 in region**



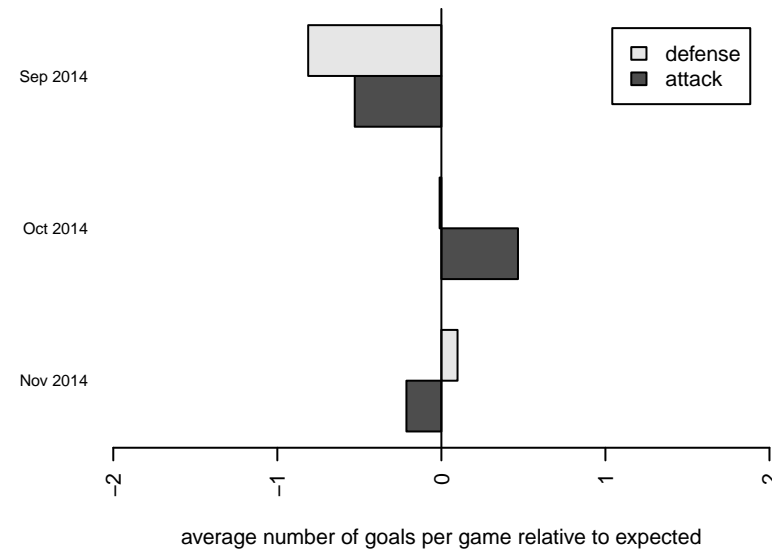
**attack and defense rating
relative to others at age
and all opponents in last 13 months**



Performance relative to 13 month average



Performance relative to 13 month average



| date | home | | away | | venue | pred.home | pred.away |
|-------------|-----------------------|----|---------------------------|---|--------------------|------------------|------------------|
| 2014-12-07 | NPSA Titans A B03 | 4 | NK Crew B03 | 0 | 2014 PSPL Copa U11 | 3.37 | 2.08 |
| 2014-11-23 | NPSA Titans A B03 | 2 | Seattle Celtic Black B03 | 2 | 2014 PSPL Copa U11 | 2.92 | 1.17 |
| 2014-11-22 | FC Tacoma White B03 | 0 | NPSA Titans A B03 | 9 | 2014 PSPL Copa U11 | 0.72 | 8.33 |
| 2014-11-15 | Kent City Black B03 | 1 | NPSA Titans A B03 | 2 | 2014 PSPL Copa U11 | 0.75 | 2.72 |
| 2014-11-01 | NW United Classic B03 | 0 | NPSA Titans A B03 | 5 | 2014 PSPL Copa U11 | 0.76 | 4.88 |
| 2014-10-25 | ISC Gunners C B03 | 2 | NPSA Titans A B03 | 1 | 2014 PSPL Copa U11 | 2.35 | 1.66 |
| 2014-10-19 | NK Crew B03 | 3 | NPSA Titans A B03 | 3 | 2014 PSPL Copa U11 | 2.08 | 3.37 |
| 2014-10-18 | NPSA Titans A B03 | 11 | Seattle Celtic Silver B03 | 1 | 2014 PSPL Copa U11 | 7.46 | 1.06 |
| 2014-10-04 | NPSA Titans A B03 | 2 | Emerald City FC Blue B03 | 1 | 2014 PSPL Copa U11 | 2.63 | 1.46 |
| 2014-09-27 | NPSA Titans A B03 | 5 | Seattle Celtic Gold B03 | 3 | 2014 PSPL Copa U11 | 7.96 | 0.95 |
| 2014-09-13 | Cascade FC White B03 | 1 | NPSA Titans A B03 | 6 | 2014 PSPL Copa U11 | 0.56 | 3.93 |
| 2014-09-06 | NPSA Titans A B03 | 2 | Emerald City FC Black B03 | 1 | 2014 PSPL Copa U11 | 2.70 | 1.05 |